

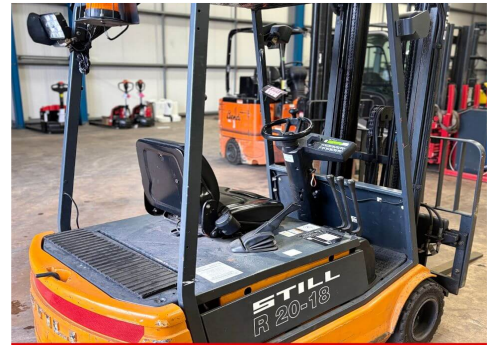
Still R20-18 Electric Forklift



SOLD Similar in stock



SOLD Similar in stock



SOLD Similar in stock

Make	Still	Model	R20-18
Fleet Number	1713	Year of Manufacture	2000
Hours	13994	Power/Fuel Type	Electric
Capacity	1800KG	Lift Height	5020mm
Closed Height	5020mm	Mast Type	Duplex
Price	SOLD		

Built in 2000, this STILL R20-18 is a 1800kg 3-wheel electric counterbalance forklift with a lift height up to 5020mm.

SOLD

Standard Warranty: 30 Days Parts and Labour

For all enquiries please contact The Westexe Group using the details below.

Email: info@westexeforklifts.co.uk

Exeter: 01392 464 656 | Plymouth: 01752 255 211 | Truro: 01872 470 664 | Barnstaple: 01271 309 309