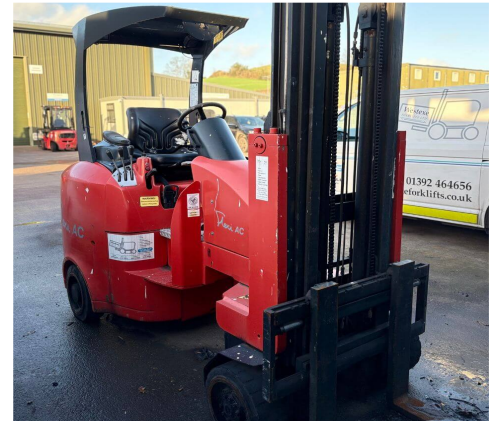


## Flexi G4 Articulated Forklift



<b>Make</b>	Flexi	<b>Model</b>	G4
<b>Fleet Number</b>	8582	<b>Year of Manufacture</b>	2010
<b>Hours</b>	5280	<b>Power/Fuel Type</b>	Electric
<b>Capacity</b>	2000KG	<b>Lift Height</b>	7620mm
<b>Closed Height</b>	7620mm	<b>Mast Type</b>	Triple

The Flexi G4 is a versatile electric articulated VNA (Very Narrow Aisle) forklift designed to maximise warehouse storage by operating in aisles as narrow as 6-7 feet (approx. 1.6m-2m), increasing capacity by up to 50%. It uses front-wheel drive and steering to articulate 180°, allowing it to pick pallets on both sides of an aisle without requiring tail swing space.

Price on enquiry

**Standard Warranty:** 30 Days Parts and Labour

For all enquiries please contact The Westexe Group using the details below.

Email: [info@westexeforklifts.co.uk](mailto:info@westexeforklifts.co.uk)

Exeter: 01392 464 656 | Plymouth: 01752 255 211 | Truro: 01872 470 664 | Barnstaple: 01271 309 309