

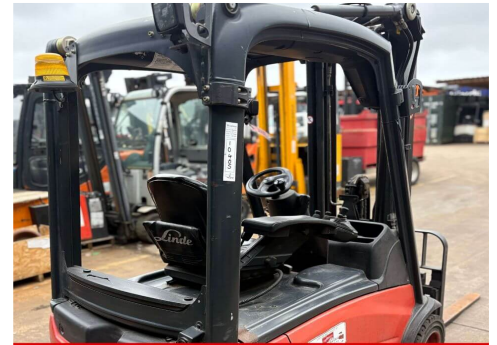
## Linde E18-01 Electric Forklift



**SOLD** Similar in stock



**SOLD** Similar in stock



**SOLD** Similar in stock

<b>Make</b>	Linde	<b>Model</b>	E18-01
<b>Fleet Number</b>	10405	<b>Year of Manufacture</b>	2014
<b>Hours</b>	9800	<b>Power/Fuel Type</b>	Electric
<b>Capacity</b>	1800KG	<b>Lift Height</b>	4670mm
<b>Mast Type</b>	Duplex	<b>Closed Height</b>	2120mm
<b>Price</b>	SOLD		

The Linde E18-01 is a 1.8-tonne (1,800 kg or 3,500–4,000 lbs) electric counterbalance forklift, designed primarily for high-intensity indoor or sheltered material handling. It is typically a 3-wheel electric truck designed for high manoeuvrability in tight spaces.

**SOLD**

**Standard Warranty: 30 Days Parts and Labour**

For all enquiries please contact The Westexe Group using the details below.

Email: [info@westexeforklifts.co.uk](mailto:info@westexeforklifts.co.uk)

Exeter: 01392 464 656 | Plymouth: 01752 255 211 | Truro: 01872 470 664 | Barnstaple: 01271 309 309