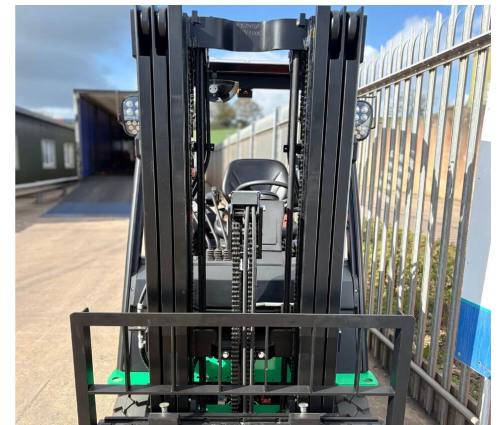


## Hangcha XC315 Electric Forklift



<b>Make</b>	Hangcha	<b>Model</b>	XC315
<b>Fleet Number</b>	14372	<b>Hours</b>	8
<b>Power/Fuel Type</b>	Electric	<b>Capacity</b>	1500KG
<b>Lift Height</b>	4500mm	<b>Mast Type</b>	Triple
<b>Closed Height</b>	2038mm		

The Hangcha XC315 electric forklift is a zero-emission, lithium-ion powered material handling vehicle designed for both indoor and outdoor lifting, stacking, and transporting of heavy goods. It typically handles loads up to 1.5 tonnes and excels at navigating tight, narrow spaces like warehouses and shop floors.

Price on enquiry

**Standard Warranty:** 30 Days Parts and Labour

For all enquiries please contact The Westexe Group using the details below.

Email: [info@westexeforklifts.co.uk](mailto:info@westexeforklifts.co.uk)

Exeter: 01392 464 656 | Plymouth: 01752 255 211 | Truro: 01872 470 664 | Barnstaple: 01271 309 309